



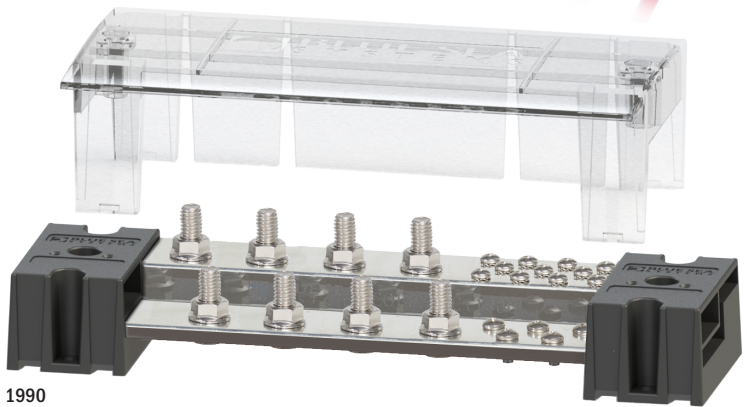
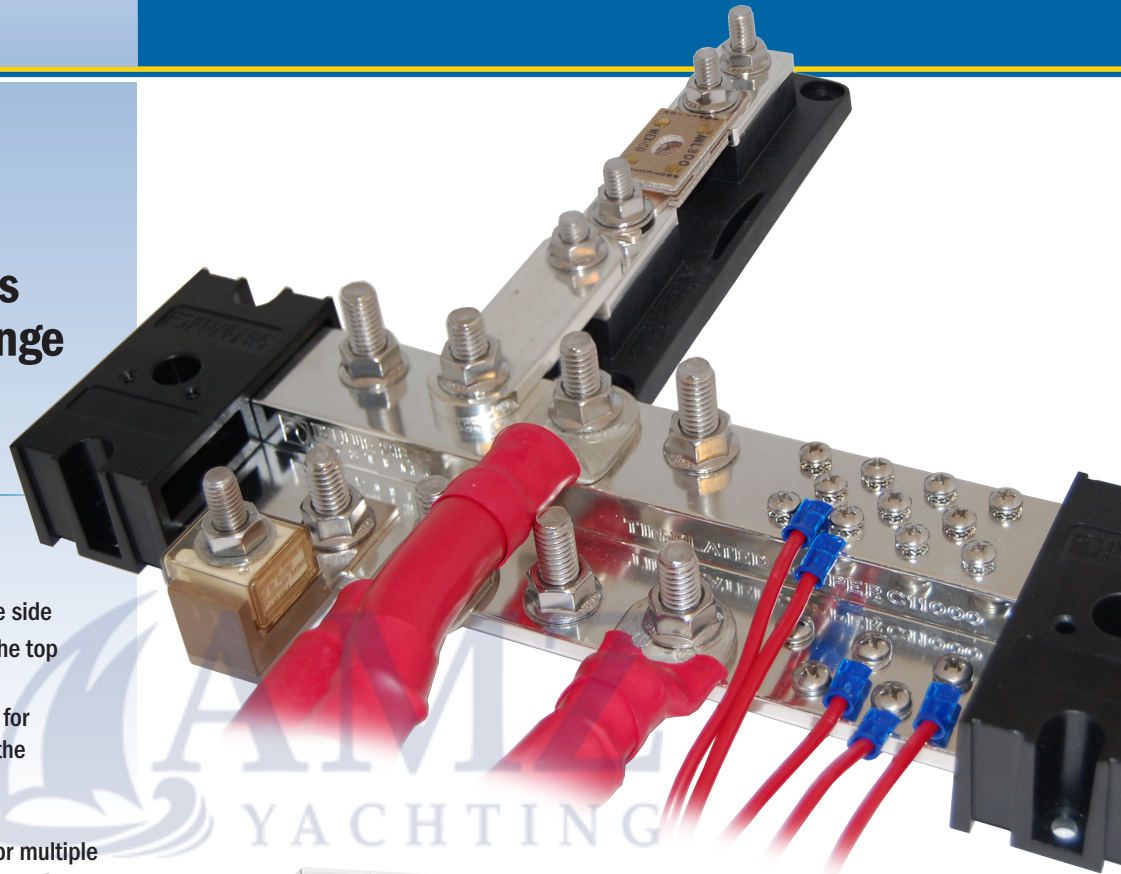
NEW

PowerBar 1000

1000A COMMON BUSBAR

The PowerBar 1000 is a 1,000 Amp busbar with various size studs and screws to connect a wide range of heavy cables and small wires together

- Tin-plated C11000 copper for maximum conductivity
- Staggered studs allow wires to run on one side
- Can accommodate installations against the top of an engine compartment bulkhead
- Stepped bus design offers two elevations for conductors which doubles the density of the wire loom
- Busbar and fuse block elevations match Blue Sea Systems' fuse blocks allowing for multiple fuse block attachments, eliminating the need for connecting cables
- One-piece serrated flange nuts ensure safe and secure connections
- Stainless steel #10-24 and #8-32 screws with captive lock washers for securing smaller gauge wires
- Busbar may be cut to a shorter length to accommodate constricted spaces
- Bi-directional busbar end caps allow two or more busbars to be ganged
- Snap on insulating cover meets ABYC and USCG requirements and includes label recess
- Models available with either 3/8" or 5/16" studs

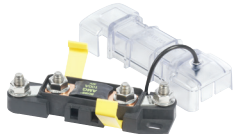


1990

Related Products



Safety AMI®/MIDI® Fuse Block 7720



Safety MEGA®/AMG® Fuse Block 7721



Terminal (MRBF) Fuse Block 2151



Terminal (MRBF) Fuse Block 5191



Class T Fuse Block 5502



ANL Fuse Block 5503



Paralleling Link Bus 9160

PowerBar 1000

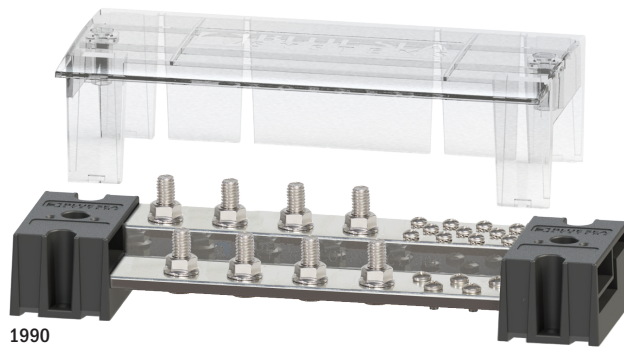
1000A COMMON BUSBAR



Specifications

Continuous Rating	1000A
Voltage Max. Operating	150V AC/DC
Mounting Holes	Accepts #10 (M5) Screws
Bus Material	Tin-Plated Copper C11000

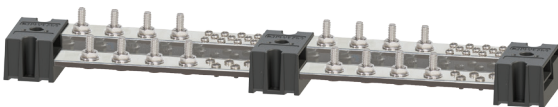
PN	Cover	Terminal Stud	Terminal Screw
1990	Included	8 x 3/8" - 8	5 x #10-24, 11 x #8-32
1991	Included	12 x 3/8" - 12	5 x #10-24, 11 x #8-32
1992	Included	8 x 5/16" - 8	5 x #10-24, 11 x #8-32
1993	Included	12 x 5/16" - 12	5 x #10-24, 11 x #8-32
1990B	No	8 x 3/8" - 8	5 x #10-24, 11 x #8-32
1991B	No	12 x 3/8" - 12	5 x #10-24, 11 x #8-32
1992B	No	8 x 5/16" - 8	5 x #10-24, 11 x #8-32
1993B	No	12 x 5/16" - 12	5 x #10-24, 11 x #8-32
2730B	Cover for PowerBars 1990 and 1992	--	--
2731B	Cover for PowerBars 1991 and 1993	--	--



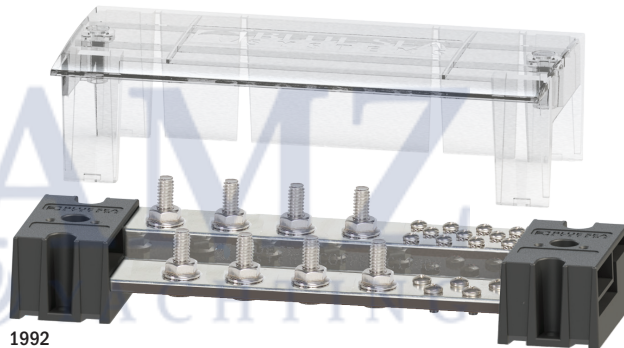
1990
Terminal Stud: 8 x 3/8" - 8



1991
Terminal Stud: 12 x 3/8" - 12



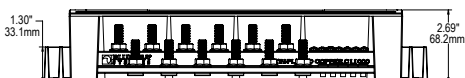
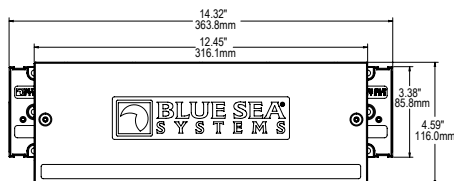
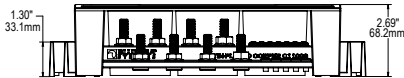
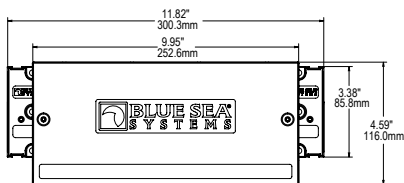
Gang two or more PowerBars together



1992
Terminal Stud: 8 x 5/16" - 8



1993
Terminal Stud: 12 x 5/16" - 12



425 Sequoia Drive
Bellingham, WA 98226 USA
p 360.738.8230
p 800.222.7617 USA and Canada
f 360.734.4195
conductor@blueseas.com
www.blueseas.com

Specifications subject to change.
See blueseas.com for current information.
980018860 Rev.001